

# Hugsen Home System C 770 Keeping the senior safe 24/7





**Dear Customer,**

Congratulations on choosing the Hugsen C 770 system! This system has sensors in your elderly home that send alerts to your phone.

There are three types of alerts:

**Green:** Everything's normal



**Yellow:** Check if everything's okay

**Red:** Check the adult's condition right away

These alerts help you know if everything's going well with the adult's daily life.

On the box, you'll find a QR code. Scan it to download the Senior App. Follow the instructions in the app to register and install the hub and sensors.

Here's how to get started:

1. To download the Senior App, click here for the  or here for  and follow the instructions.
2. After registering in the Senior App, you'll get a link via SMS to download the Caregiver App on the caregiver's phone. You can add up to five caregivers.
3. Follow the instructions on the next page.

If you have any questions or need help, contact our support team at [support@hugsen.com].  
We're here for you!

Thank you for choosing Hugsen. We're excited to welcome you to our family.

**Warm regards,  
The Hugsen Family**





## The items in the box include:

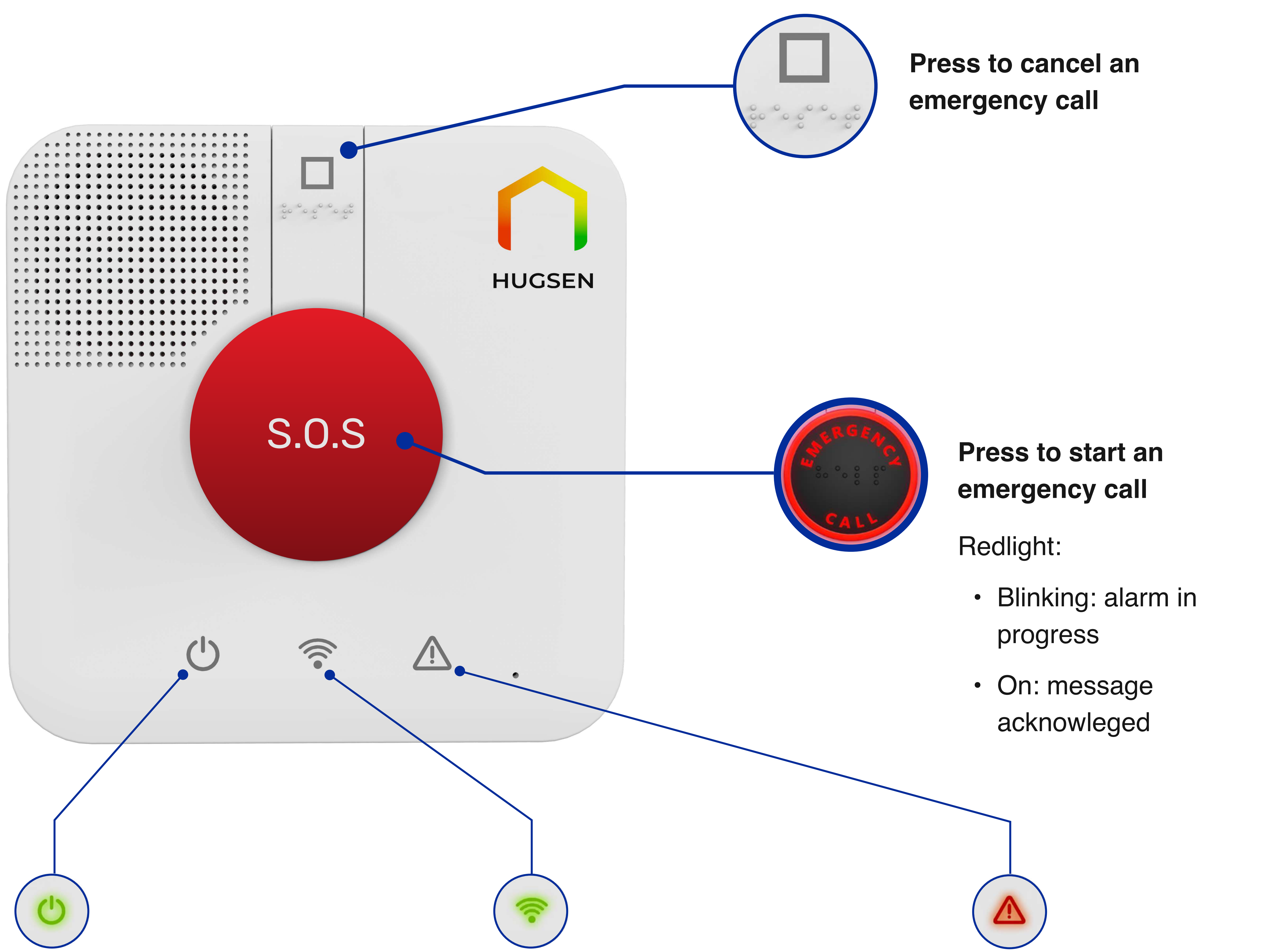
- 1X Control Panel
- 1X Door Sensor
- 1X Panic Button
- 4X Movement Sensors
- 1X Charger For The Control Panel
- 1X SIM card

Please buy five CR123 or CR123A batteries to install the sensors





# Control Panel

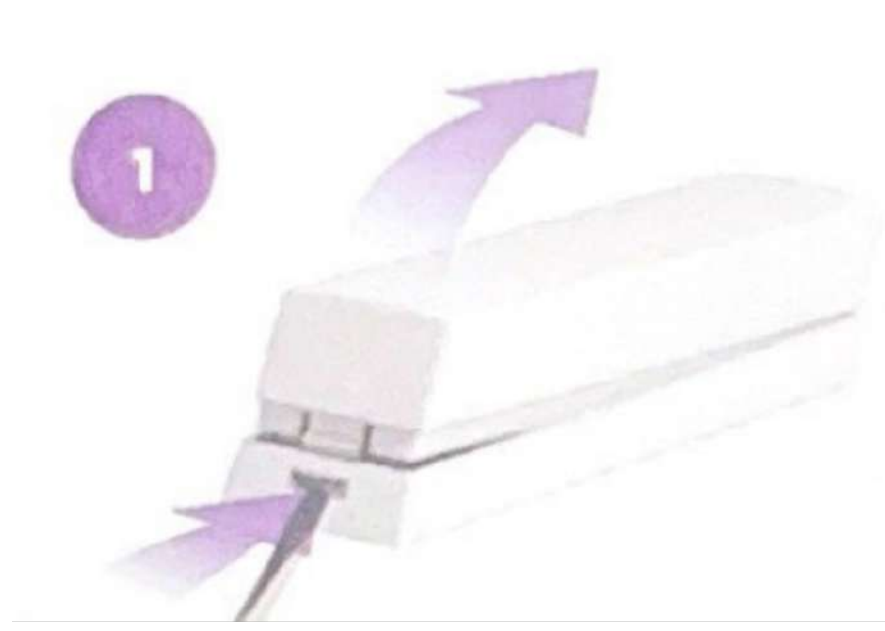


# Location

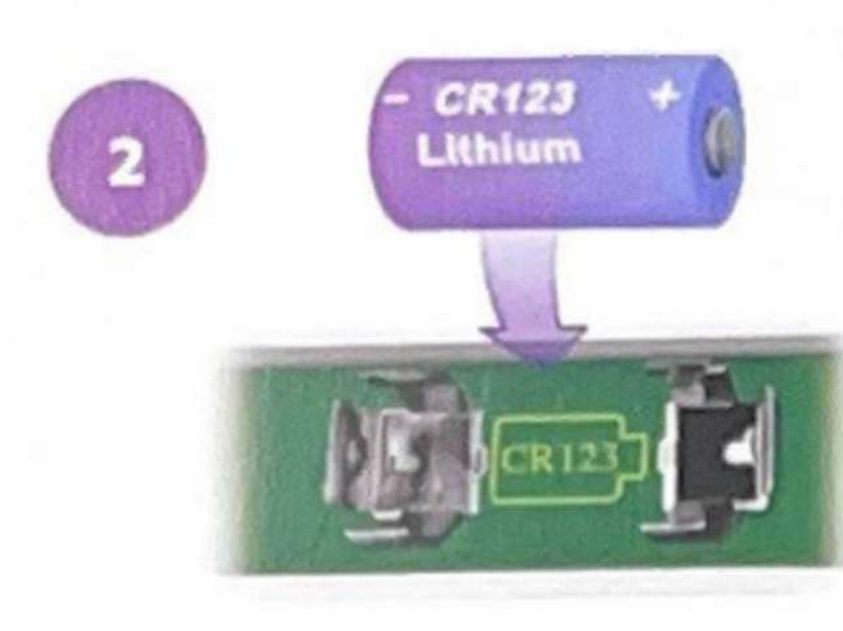
On a flat wall or in a corner	At least 2 m (6.6 ft.) - 2.2 m (7.2 ft.)	Height of 2 m (6.6 ft.) - 2.2 m (7.2 ft.)
Not facing windows, sunlight or a strong light source	Within 12 m (40 ft.) of the coverage area	Spherical lens facing downward



## Door Sensor



Open the transmitter



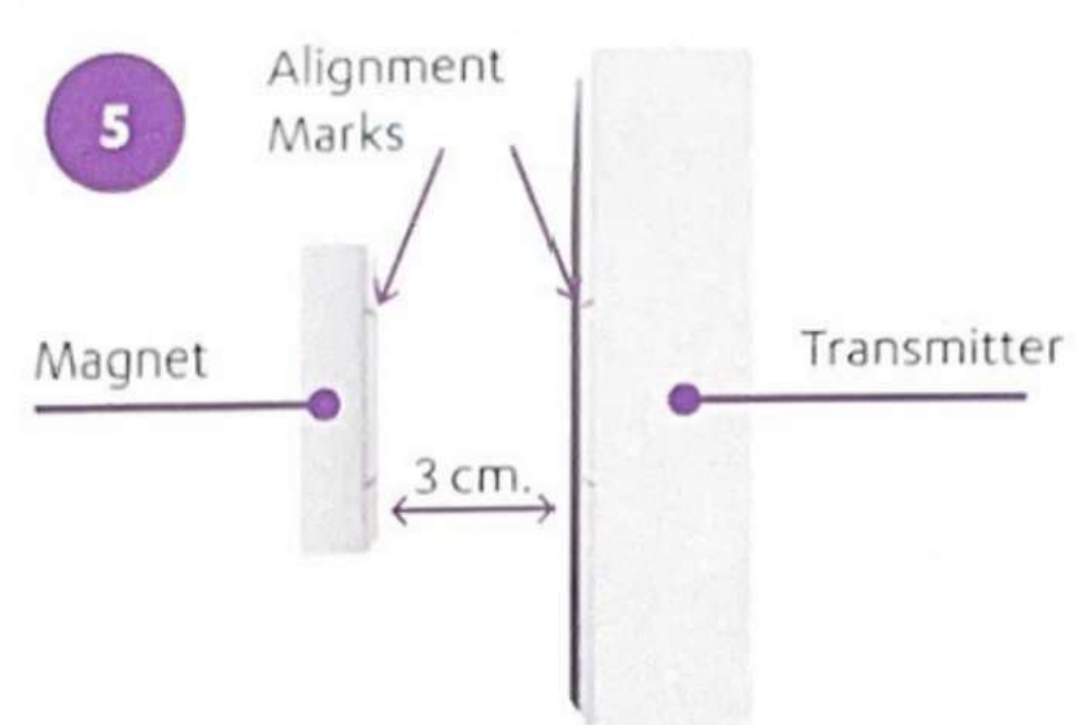
Insert the battery



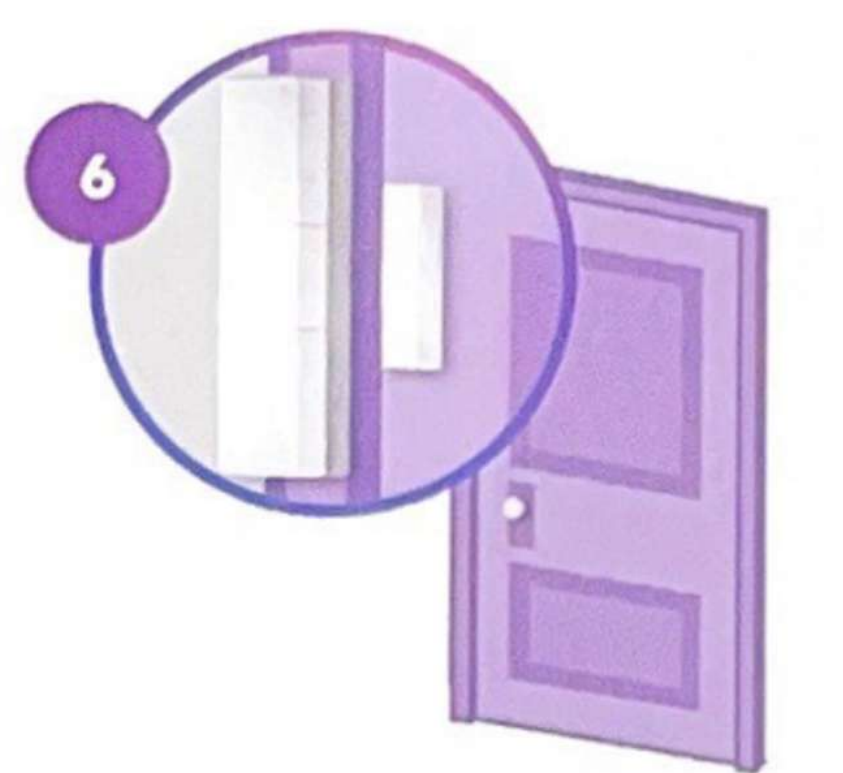
Close the transmitter



Peel off the protective strips



Close the transmitter



Press one unit on the door and the other on the frame

## Panic Button



Put the battery in the Panic Button

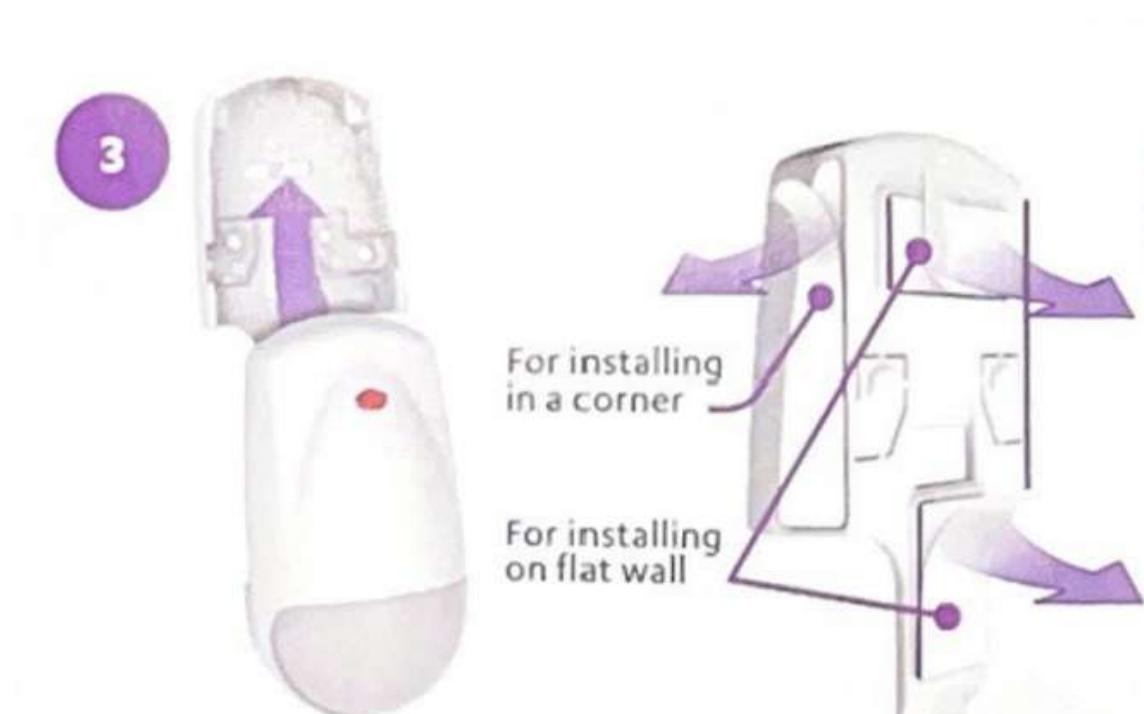
## Movement Sensor



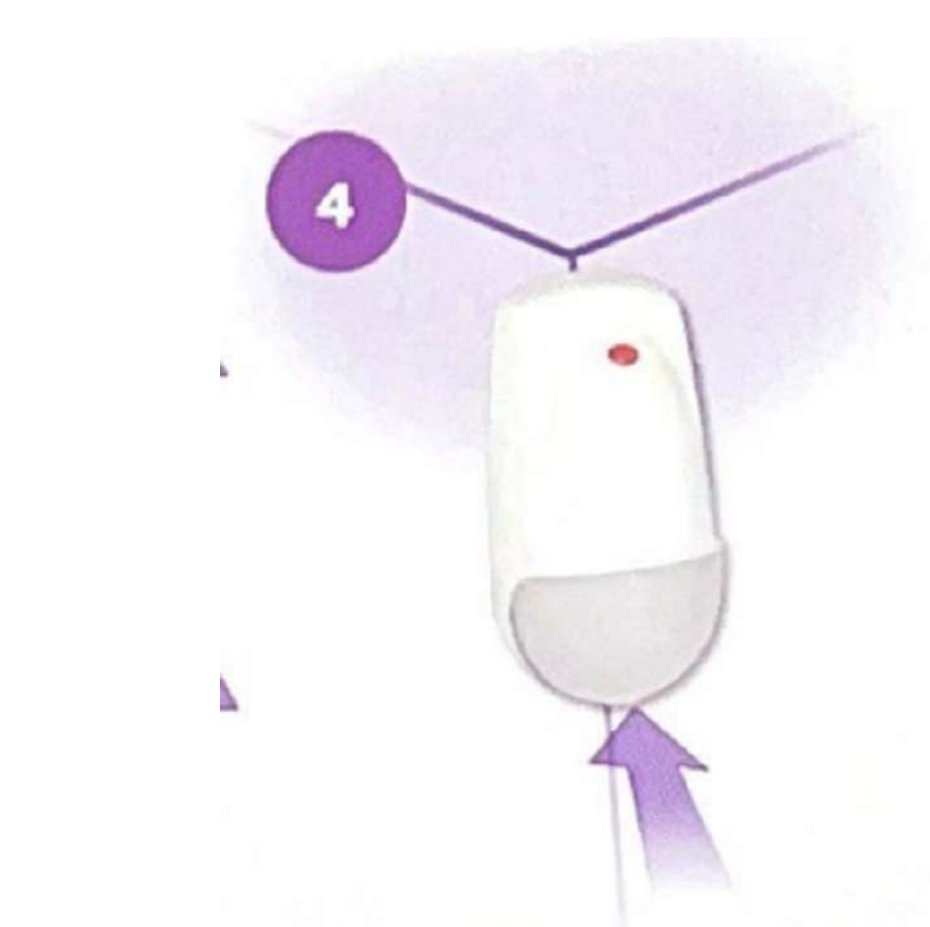
Remove the mounting base



Open the battery cover and insert the battery



Insert the detector into the mounting base.  
Then peel off the strips. Use only the adhesives needed for the installation (flat wall or corner).



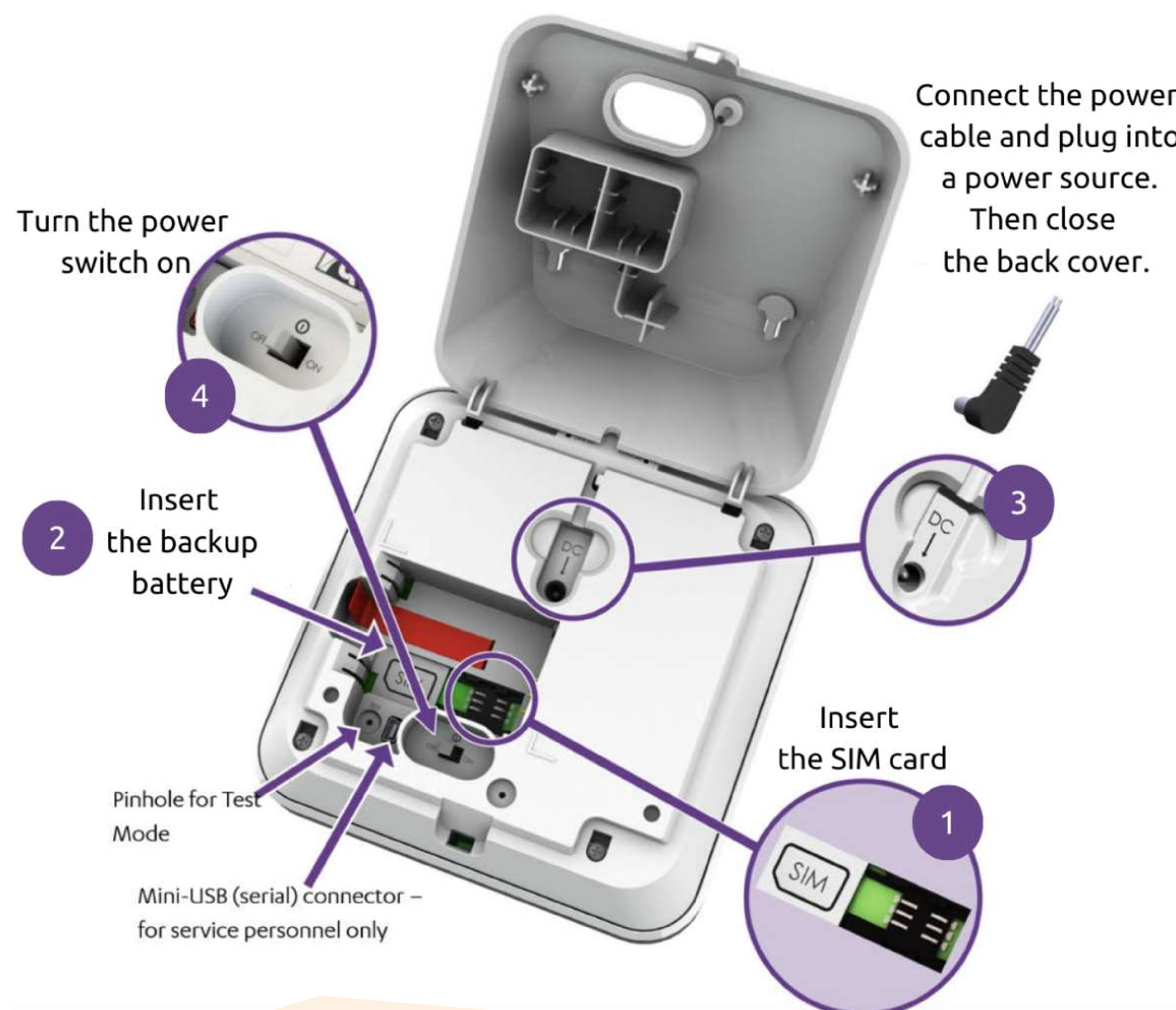
Press onto the wall or corner



# Installation Instructions For The C 770 Kit

## Actions for Customer

1. Download the Senior App and log in.
2. Enter Account ID in app (placed on the box).
3. Install the Control Panel



4. Verify that the installation of the CP is successful as follows: check that the power LED and communications LED are lit green and stable (and iconnect it in app).

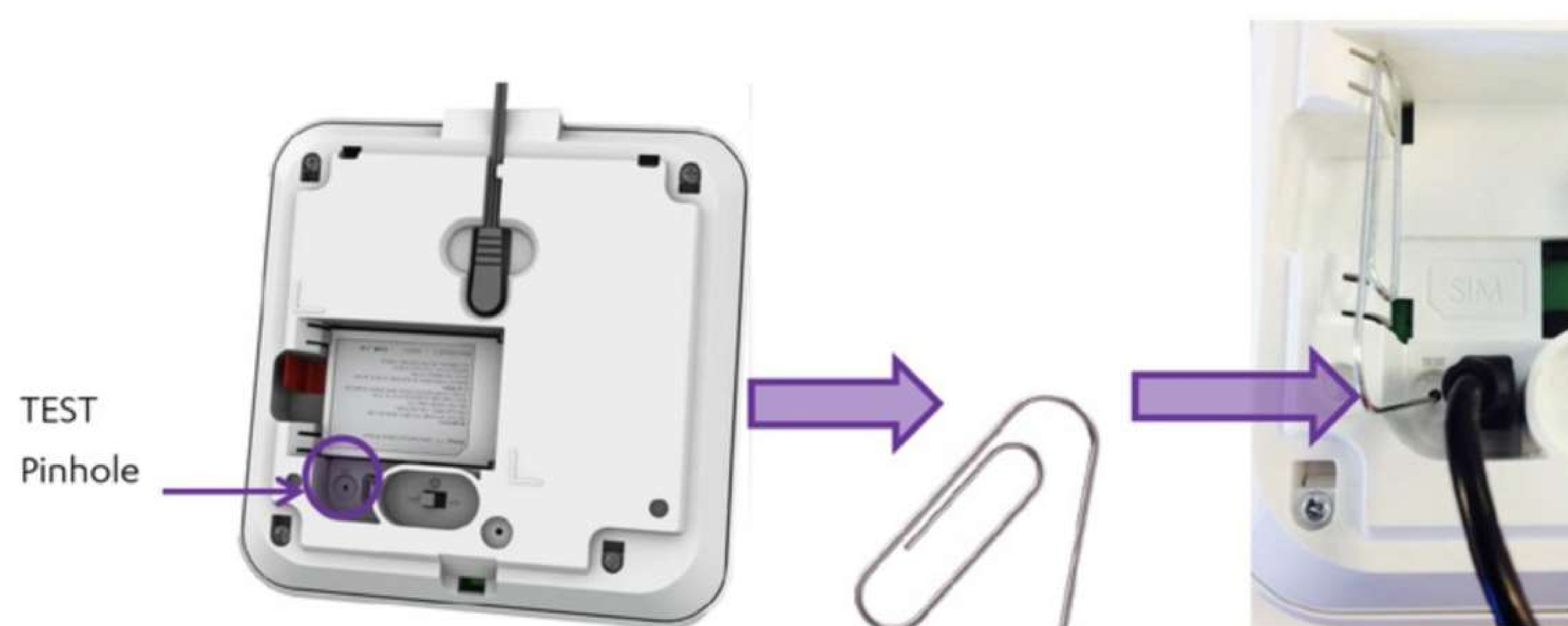




# Installation Instructions For The C 770 Kit

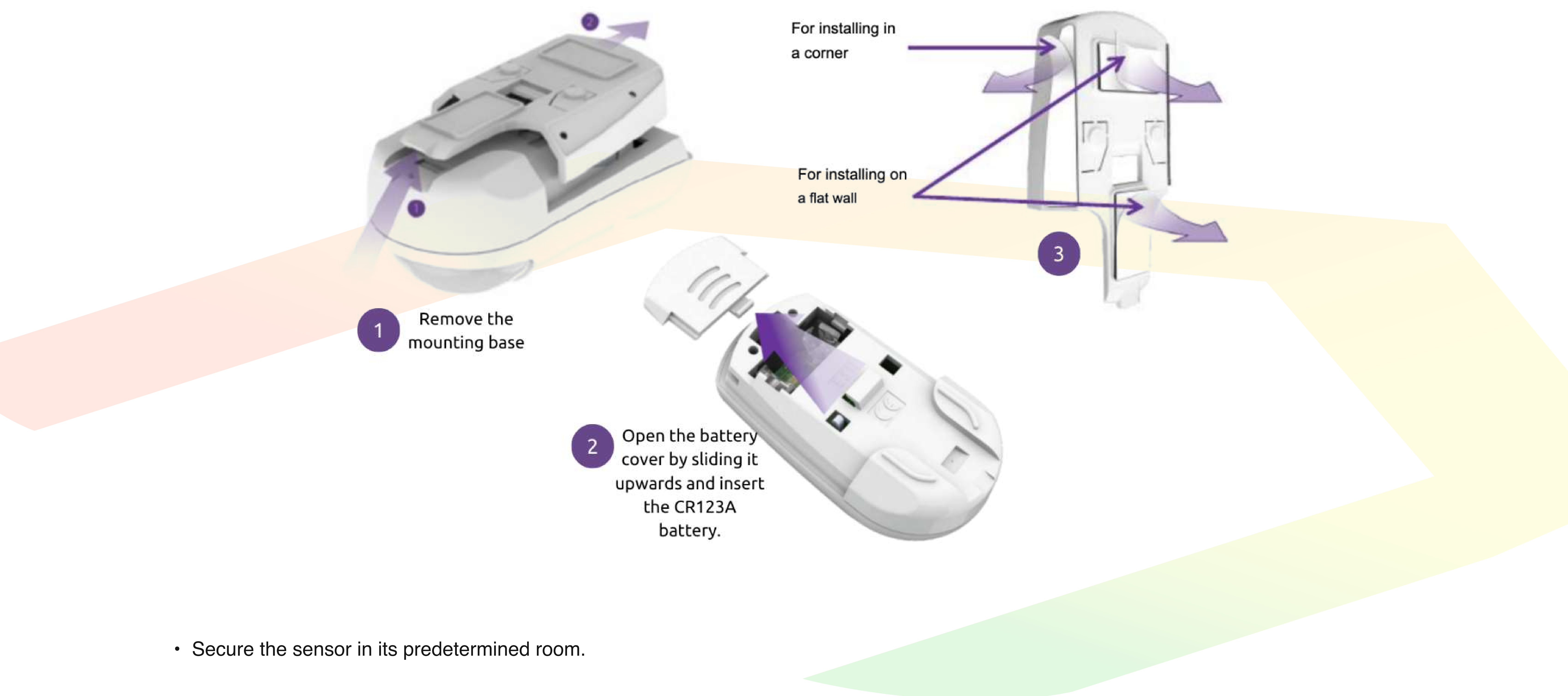
## 5. Activate the installation mode:

- Locate the TEST pinhole on the back of the CP.
- Insert the open end of a paperclip or probe into the pinhole, as shown at the picture
- Push the paper clip or probe in the pinhole until you feel a click. The CP announces "Installation test starts."



## 6. Perform each sensor installation according to the following general installation procedure:

- Insert the batteries in the peripheral. When CP recognizes the sensors, the CP installation mode program gives a prompt to verify correct placement and that detection is working.



- Secure the sensor in its predetermined room.



# Installation Instructions For The C 770 Kit

**7. Installing sensors is recommended in the following sequence (connect it in app is the same sequence after connecting with CP):**

**1. Install an MGLS on the front door**

- Next to the detector so that the line marks on both the magnet and the detector are aligned
- No further than 3 cm (1 in.) from the detector

**2. Install a motion detector in the bedroom:**

- Height: 1.5-2 m (4 ft. 11 in. - 6 ft. 7 in.)
- Direction: diagonal to the bed and not in front of the door

**3. Install a PIR in the restroom:**

- Height: 30-50 cm (12 in. – 1 ft. 8 in.) above the toilet seat, depending on the distance from the seat
- Direction: diagonal to the seat and not facing the door
- If it is not possible to avoid the doorway, position the device in front of the seat

**4. Install a PIR in the living room:**

- Height: 1.5-2 m (4 ft. 11 in. - 6 ft. 7 in.)
- Direction: diagonal to the sitting area and not facing the dining room, specifically for a dining room and living room without a separating w

**5. Install a PIR in the dining room:**

- Height: 1.5-2 m (4 ft. 11 in. - 6 ft. 7 in.)
- Direction: diagonal to the dining table and not facing the living room, specifically for a dining room and living room without a separating wall

